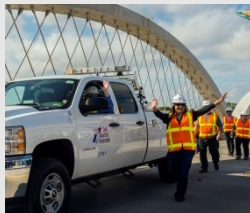
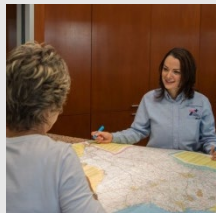




TEXAS DEPARTMENT OF TRANSPORTATION



STATEWIDE TRUCK PARKING STUDY

Great American Trucking Show



August 2019

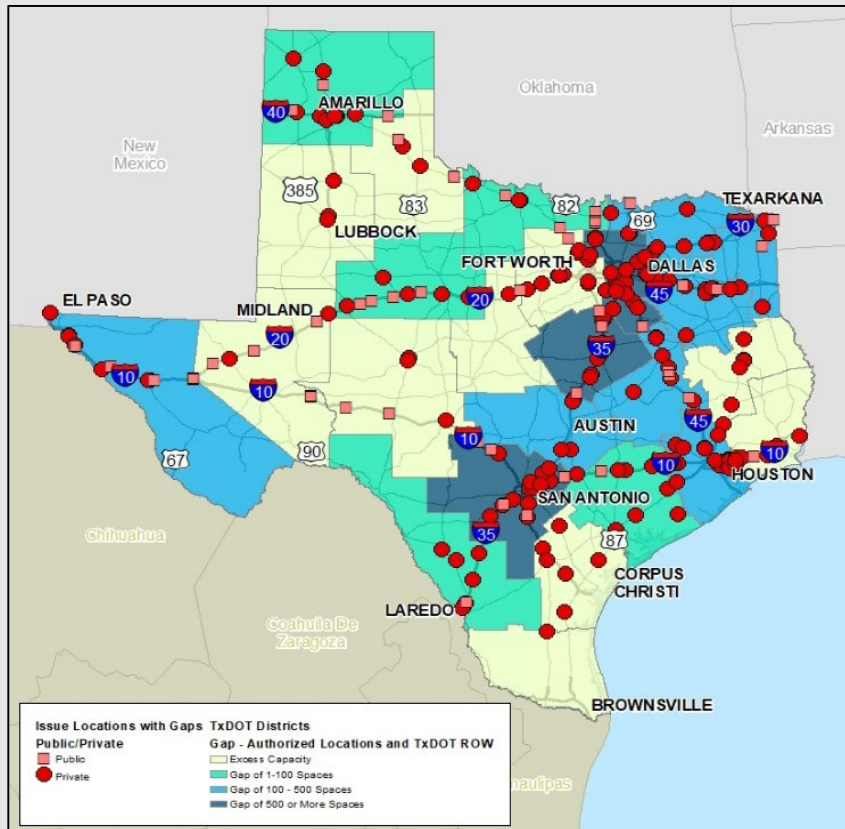
Common Challenges

- Lack of capacity in general
- High demand near freight generators
- Providing amenities
- Ensuring safety
- Policies and regulations, including local zoning
- Signage and information about truck parking

Common Solutions

- Use underutilized land for truck parking
- Develop public or private truck parking near freight activity
- Improve availability of information about truck parking locations
- Encourage development of truck parking through tax incentives

Statewide Truck Parking Gap



Source: ATRI 2018 Data, Processed by Cambridge Systematics 2019

18% of all parking locations

are **at or over capacity** at least 20 hours during the day

45% of all parking locations

are **at or over capacity** at some point during the day

60% of large truck stops

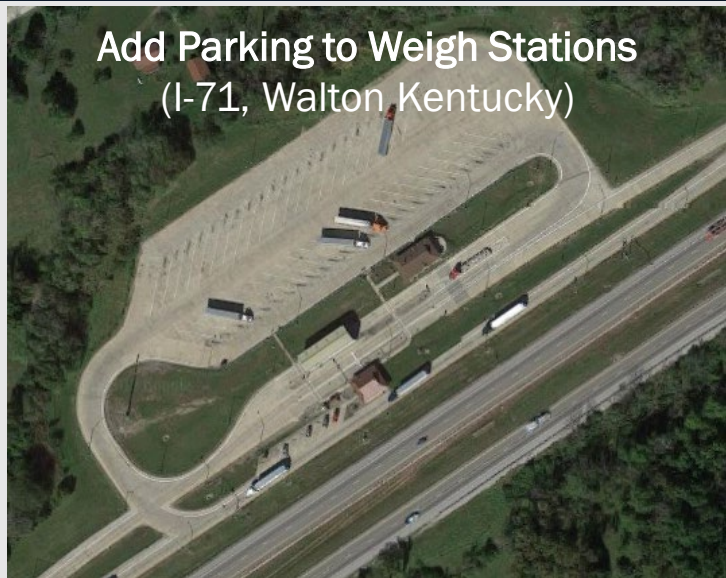
(with over 100 spaces)

are **at or over capacity** at some point during the day

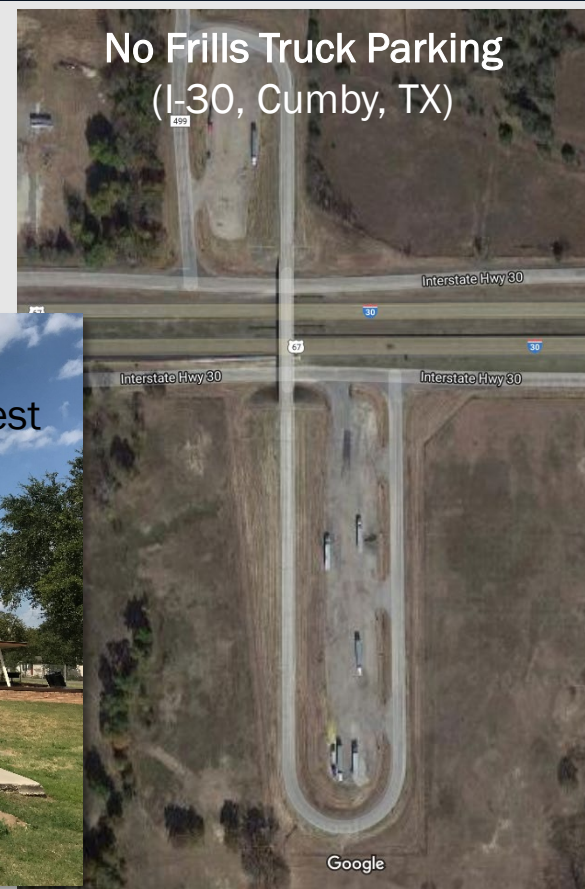


Public Investment Options Outside Urban Centers

**Add Parking to Weigh Stations
(I-71, Walton Kentucky)**



**No Frills Truck Parking
(I-30, Cumby, TX)**



**Add or Expand Rest Areas
(I-35, Medina County Safety Rest
Area NB, TX)**







INTERSTATE
10

I-10 Corridor Coalition Truck Parking Availability System

ATCMTD Grant

volume 1 – technical approach

submitted to
U.S. Department of Transportation –
Federal Highway Administration

submitted by
Texas Department of Transportation



**Advanced Transportation
and Congestion Management
Technologies Initiative
(ATCMTD) Initiative**

Applicant
Texas Department
of Transportation

Type of Eligible Applicant
State Agency

ATCMTD Grant Request
\$6,850,000

Location
Texas, California, New Mexico,
Arizona

Congressional Districts
Texas (TX 02, TX 07, TX 10, TX 11, TX 14,
TX 15, TX 16, TX 18, TX 21, TX 23, TX 27,
TX 28, TX 29, TX 36); California (CA 08,
CA 27, CA 31, CA 32, CA 33, CA 34, CA 35,
CA 36, CA 37, CA 39, CA 40); Arizona
(AZ 1, AZ 2, AZ 3, AZ 4, AZ 7, AZ 8, AZ 9)
New Mexico (NM 2)

NOFO Number
693JJ318NF00010

JUNE 2018



I-10 CONNECTS
I-10 CORRIDOR COALITION



Texas
Department of
Transportation



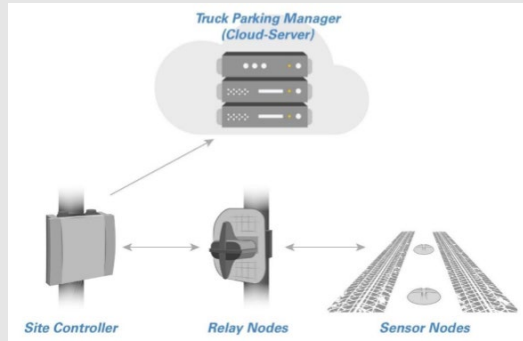
Caltrans



ADOT



NMDOT



Some Rest Areas are Underutilized. Why?

Anthony Travel Info. Center (El Paso, I-10) - Example Location Utilization

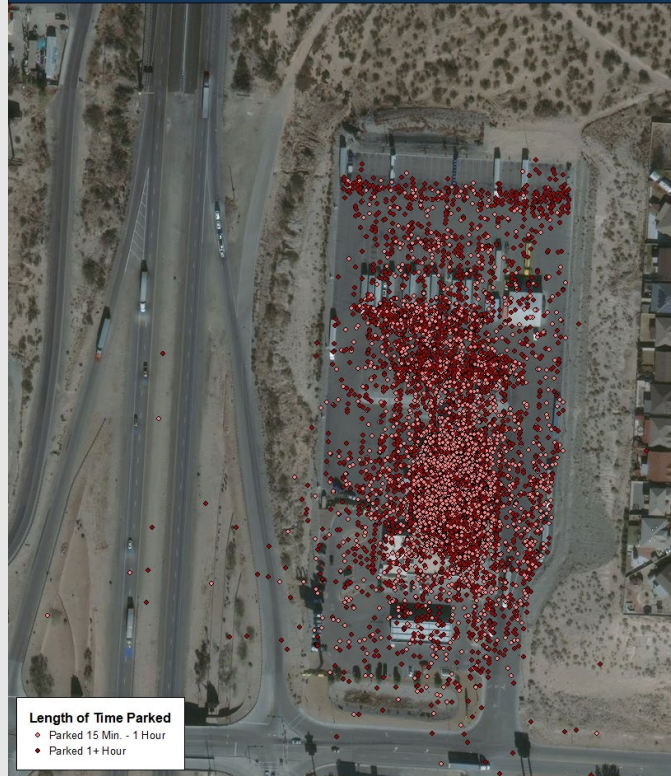


Love's, Pilot, and Flying J west of El Paso overflow daily, while...

Less than 2 miles south...

The Anthony Travel Information Center never has more than 6 trucks parked

Loves (El Paso, I-10) - Example Location Utilization



Thank you!

Sherry Pifer

TxDOT Freight Branch Manager

sherry.pifer@txdot.gov

512-460-1727